

# **Data Digester 1.6.6**

Installation Manual



**Copyright © 2005-2013 Leisenfels UG (haftungsbeschränkt).  
All rights reserved.**

While the information in this manual has been compiled with great care, it may not be deemed an assurance of product characteristics. Leisenfels shall be liable only to the degree specified in the terms of sale and delivery.

The reproduction and distribution of the documentation and software included with this product is subject to written permission by Leisenfels. We reserve the right to make alterations that arise as the result of technical development.

Debian is a registered trademark of Software in the Public Interest, Inc.

Java and Solaris are registered trademarks of Oracle Corporation

Linux is a registered trademark of Linus Thorvalds.

Mac and Mac OS are registered trademarks of Apple, Inc.

MS-DOS, Windows, Windows 95, Windows 98, Windows NT, Windows 2000, Windows XP, Windows 2003, Windows Vista and Windows 7 are registered trademarks of Microsoft, Corp.

PGP and Pretty Good Privacy are registered trademarks of PGP Corporation

UNIX is a registered trademark of X/Open Company Limited.

The name Leisenfels is a registered trademark of Axel Schwolow. All other names mentioned may be trademarks or registered trademarks of their respective owners.

Subject to change without notice. No liability for technical errors or omissions.

Leisenfels UG (haftungsbeschränkt)  
Am Langenkamp 11  
49143 Bissendorf  
Germany

[www.leisenfels.com](http://www.leisenfels.com)

Bissendorf, 04/13/2013



**THINK B4  
YOU PRINT!**

## Installation Manual

This installation manual is part of the available documentation of the Data Digester software (Digester for short). It is delivered as a printable PDF document and contains all information required for a quick deployment of the described software.

You can find detailed pieces of information about the configuration and use of the software in the user manual and the help system of the software,

Most sections of this manual contain information for all available editions of the software. Special instructions for the various editions are either highlighted directly in the text or by appropriate symbols (see the symbols below).

If you find an error or just want to give feedback or suggestions concerning this documentation, please send an e-mail to:

support@leisenfels.com

## Leisenfels on the Internet

If you have questions or if you need additional assistance, please contact our Internet server [www.leisenfels.com](http://www.leisenfels.com) which is available around the clock. Current versions of the software and documentation are available for download here.

## Used Symbols



Important instruction that should be followed



Additional instructions which can be helpful



Special instruction for the Basic Edition



Special instruction for the Standard Edition



Special instruction for the Enterprise Edition

# Table of Contents

<b>1 Installation</b>	<b>5</b>
1.1 System Requirements	8
1.2 Installer for Windows	9
1.3 Archive for Windows	17
1.4 Installer for Mac OS	18
1.5 Installer for Linux/UNIX	25
1.6 Archive for Linux/UNIX	31
1.7 RPM Package	32
1.8 Debian Package	33
1.9 Web Start	33
1.10 Web Start Archive	35
1.11 Register	38

# 1 Installation

In order to install the Digester software on your computer or server you can use either one of the installers, the compressed archives, or the Web Start installation. All installation types have certain advantages which are discussed by the following pages. This chapter is divided as follows:

- [System Requirements](#)
- [Installer for Windows](#)
- [Archive for Windows](#)
- [Installer for Mac OS](#)
- [Installer for Linux/UNIX](#)
- [Archive for Linux/UNIX](#)
- [RPM Package](#)
- [Debian Package](#)
- [Web Start](#)
- [Web Start Archive](#)
- [Register](#)

## Installer

The installation with installer offers the advantage that the software needs only to be installed once for all users of the target system while the Web Start variants must be installed separately for each user. The installation with installer should be preferred if the software is installed by an administrator on a central (terminal) server with multiple users. There are currently several Windows installers for 32/64-bit available including/excluding a Java runtime environment (short *JRE*). Additionally, two DMG installers for Mac OS are available as well as a universal shell executable installer for Linux/UNIX operating systems. For Linux two additional installers for 32/64-bit including Java have been added, since future Linux distributions will not include Oracle Java any longer by default.

All installers can be executed either from the command line/shell or in a graphical environment, the latter only if the target system supports a graphical environment like Windows or X server.

If you do not know whether your Windows computer already contains a suitable Java environment you should use the installer including the JRE. If you have an Internet connection the installer without JRE is capable of downloading an appropriate JRE from the Leisenfels Internet server [www.leisenfels.com](http://www.leisenfels.com).

The following installer files are currently available for download where x.x.x must be replaced by the respective program version:

<code>digester-x.x.x-windows-with-jre.exe</code>	Installer Windows 32-bit incl. Java
<code>digester-x.x.x-windows-x64-with-jre.exe</code>	Installer Windows 64-bit incl. Java
<code>digester-x.x.x-macos-x64-with-jre.exe</code>	Installer Mac OS 64-bit incl. Java
<code>digester-x.x.x-linux-with-jre.exe</code>	Installer Linux 32-bit incl. Java
<code>digester-x.x.x-linux-x64-with-jre.exe</code>	Installer Linux 64-bit incl. Java
<code>digester-x.x.x-windows.exe</code>	Installer Windows 32-bit no Java
<code>digester-x.x.x-windows-x64.exe</code>	Installer Windows 64-bit no Java
<code>digester-x.x.x-macos.dmg</code>	Installer Mac OS no Java
<code>digester-x.x.x-unix.sh</code>	Installer Linux/UNIX no Java



Current Java runtime environments for popular operating systems may be downloaded from the Internet server of Oracle, Inc.

<http://www.oracle.com/>

## Compressed Archives

In addition to the installers there is a universally applicable compressed TAR archive (tar.gz) available. This can be deflated on Linux/UNIX systems with standard programs in a directory of your choice from where the software can be started. This installation can always be used if the installer variants of the software are not appropriate for the system. The Digester software always requires an appropriate Java environment. Additional archives exist to support Windows operating systems for 32/64-bit. The ZIP archives may be used as an alternative to the Windows installers.

As mentioned above, some of the installers for Windows already include a suitable Java runtime environment so that the software can be directly installed and executed. All other installers and also the archives require the prior installation of an appropriate Java environment.

The following archive files are currently available for download where x.x.x must be replaced by the respective program version:

<code>digester-x.x.x-windows.zip</code>	Compressed archive for Windows 32-bit
<code>digester-x.x.x-windows-x64.zip</code>	Compressed archive for Windows 64-bit
<code>digester-x.x.x-unix.tar.gz</code>	Compressed archive for Linux/UNIX

## Linux Packages

Especially for the commonly used Linux operating systems additional installation variants have been bundled. The RPM package (`.rpm`) may be used on systems with RPM support like SuSE or Red Hat. On Debian systems the Debian package (`.deb`) may be used to install the Digester software. All package variants do not include a suitable Java environment which must be installed separately.

The following package files are currently available for download where `x.x.x` must be replaced by the respective program version:

<code>digester-x.x.x-linux.rpm</code>	Package for Linux with RPM support
<code>digester-x.x.x-linux.deb</code>	Package for Debian

## Web Start

For users who want to deploy the Digester software on multiple systems without laborious installations the Web Start version is available. Here, a suitable Java version on the target system must be installed prior to the Digester installation since Web Start is part of the Java runtime environment. If a Java environment has been properly installed, the Digester software can then be installed with one single mouse click on our Internet homepage [www.leisenfels.com](http://www.leisenfels.com).

Your browser will first download a JNLP file containing the installation instructions for the Digester software. On the basis of the included settings Web Start then installs the software automatically. Here a program icon on the desktop is created like the Windows installer does. Web Start is part of the Java runtime environment which is available for most popular platforms like Windows, Mac OS, Linux or Oracle Solaris, so that the Digester software can be installed fast and easily on these systems.

If the Digester software is installed by using Web Start, a permanent Internet connection is required since each time you start the program it will look for newer versions on the server. If a newer version is available Web Start automatically cares for an update from the Internet server. You have the choice whether or not an automatic update shall be performed or if a fixed program version is to be used. The most necessary parts of the program are immediately transferred during installation. The modules such as the German language help system are downloaded when needed. Web Start installations must be made on a per user basis while a system-wide installation of the software for all users of a system is currently not possible.

The Web Start version is particularly interesting for those users who use the software on multiple systems or directly on a customer's site. The Digester software offers special menu items for the complete removal of Web Start installations directly from the running program.

## Web Start Archive

Especially for those users willing to deploy the Web Start version of the Digester software, an additional archive is available which makes the software usable from an own local server. If, for example, a permanent Internet connection is not available then the Web Start version from the Leisenfels server cannot be used. With the Web Start archive in the WAR format (`.war`) you are able to provide the Digester software from an own local Windows or Linux server while the end user deployment is as easy as if the software would have been installed from the Leisenfels server.



The installation of the Web Start archive is designed for administrators and experienced users. A preconfigured, compatible web container like Apache Tomcat is required to operate the Web Start archive.

The following Web Start archive files are currently available for download where x.x.x must be replaced by the respective program version:

`digester-x.x.x.war`

Compressed Web Start Archive

## 1.1 System Requirements

The following section provides an overview of the features needed for an effective use of the Digester software on a target system. Standard hardware like graphics card and monitor, IDE/SCSI controllers, hard disk, keyboard and mouse etc. are mandatory for modern graphical operating systems such as Windows, Mac OS, or Linux.

No special hardware is required to operate the Digester software so that the software should be executable on most current computers and servers. Depending on the number of processed files it may be necessary that the amount of memory for the Digester software be increased appropriately. This setting can be easily done directly from the software which then needs to be rebooted.



Computer systems often provide a poor performance due to slow disks! You should pay attention to the installation of reliable and fast hard disk drives. The fastest CPU does not help if the system has to wait for data from slow disks. Fast SSD hard disks may be an alternative here.

Please note that the Digester software requires a current Java runtime environment version 1.6 which is no longer available for older PCs using Windows NT 4.0 or Windows 98 SE. On Apple Mac OS computers Java 1.6 is available since system version 10.6 (Snow Leopard).



Please install the latest Java environment available. Java provides the ability to automatically search for newer versions which can be downloaded and installed in background mode. So your system can be easily kept up-to-date and you can benefit from the latest changes of the Java environment.

## **Required Computer Equipment**

- Pentium 3 class processor 1 Ghz or faster
- 128 MB of free RAM (program only) plus Java VM
- 800 x 600 pixels screen resolution or bigger
- 15 MB free hard disk space (program only)
- 85 MB free hard disk space (including Java)
  
- Oracle JRE/JDK 1.6 (32-bit versions should be preferred)
- JCE unlimited strength to use OpenPGP functionality
- Apache Tomcat 5.5 or newer (for Web Start archive only)

The use of 32-bit Java runtime environments is recommended also under 64-bit operating systems since these are known to run more stable at the moment. The limitation due to the amount of RAM made available by 32-bit operating systems normally is not relevant for programs like Digester.

You can find the list of tested operating systems on our website [www.leisenfels.com](http://www.leisenfels.com).

## **1.2 Installer for Windows**

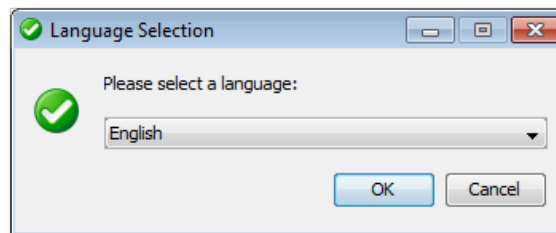
To install the Digester software under Windows you can use the files `digester x.x.x-windows-with-jre.exe` and `digester-x.x.x-windows.exe` (both 32-bit) as well as `digester-x.x.x-windows-x64-with-jre.exe` and `digester-x.x.x-windows-x64.exe` (both 64-bit) while the files named `with-jre` already include a suitable Java environment. The easiest way is to download the file `digester-x.x.x-windows-with-jre.exe` including the Java environment and all required programs and files to run the Digester software under Windows operating systems for 32/64-bit.

The use of this file has the advantage that the Digester software can be installed in environments with no Internet connection and preinstalled Java environment. For archiving purposes the licensees of the Digester software should save this file e.g. in a backup to be able to install the software at any time. This file can be installed without prior installation of a Java environment as long as the computer system meets the [system requirements](#).

If you have a slow Internet connection or if you know that an appropriate Java environment is already installed on your computer then you can also use the smaller installation file `digester-x.x.x-windows.exe`. If this is the case then you can download this file and install the software directly. If it turns out during installation that no appropriate Java environment is installed, a suitable Java version may be automatically downloaded from the Leisenfels Internet server (Internet connection required). The necessary addresses are already deposited.

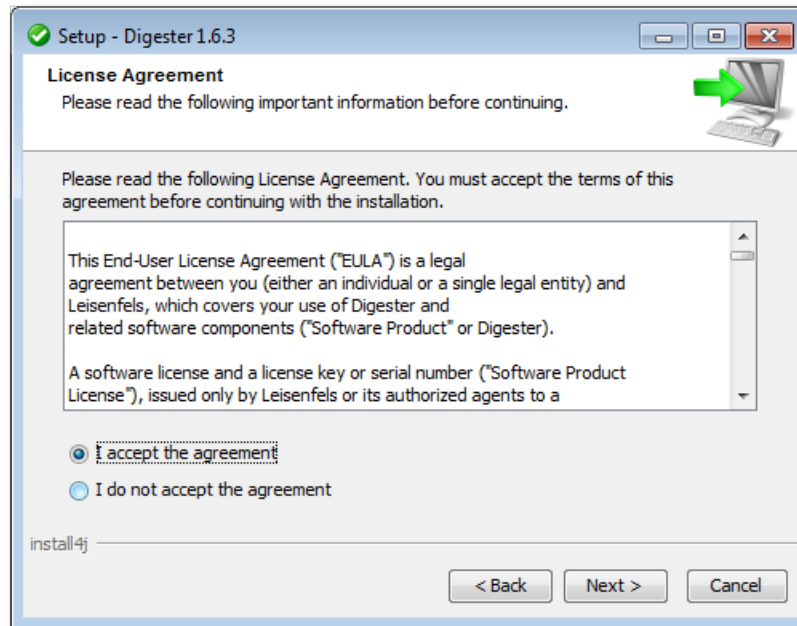
If there is no internet connection at the time of installation a suitable Java environment must be manually installed if you use the `digester-x.x.x-windows.exe` file. It is recommended that you download Java from the Internet site of Oracle, Inc. at <http://www.oracle.com>. Please note that this website is only available in English language. Alternatively you can visit the German language web pages <http://www.java.com/de>.

Once an appropriate file has been downloaded successfully from the Leisenfels Internet server you can install the software on your computer as follows. Start the EXE file under Windows e.g. by double-clicking the icon in the Windows Explorer. If you saved the installer file on the desktop then you can double-click this symbol to start the installation. The following window is opened showing the message that the installation is being prepared. Now you can choose the language for the installation:



Currently **English** and **German** are available. The selection at this point also determines the following steps while the installer assumes that the language selected here shall be used as the user language for the Digester software as well.

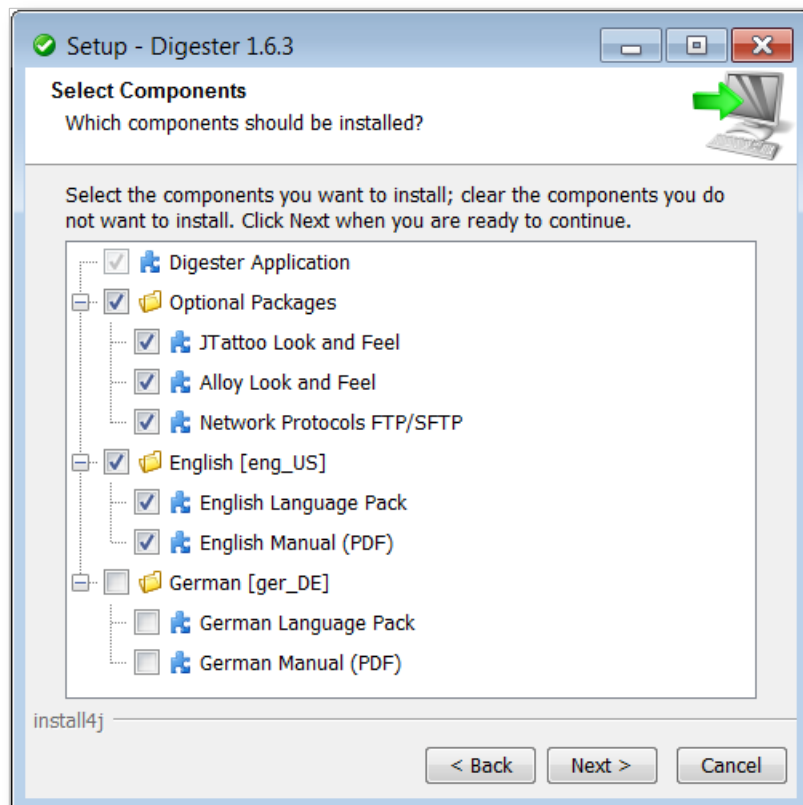
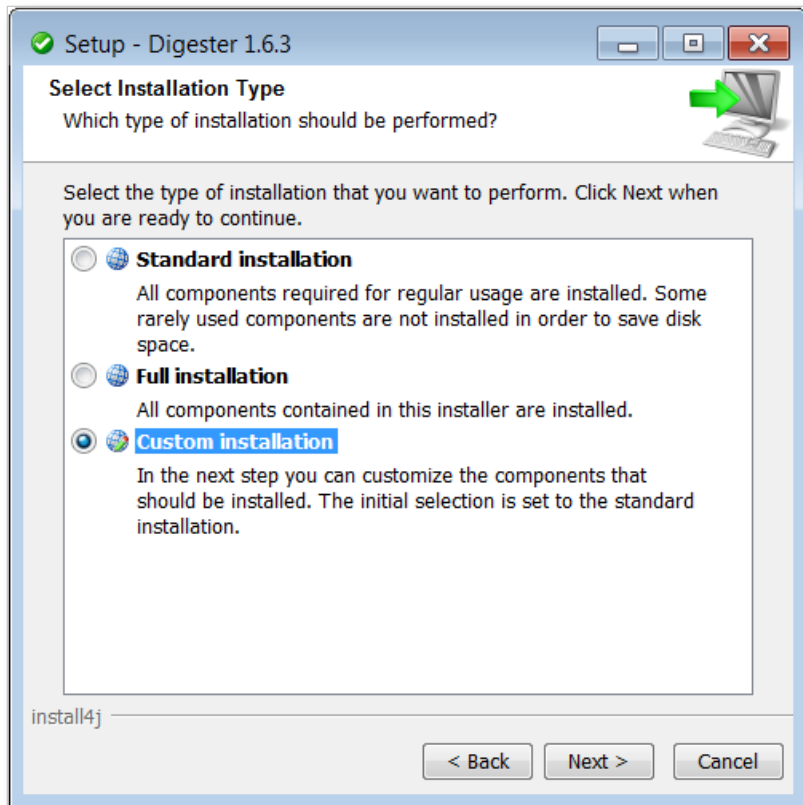
In the next step it is necessary to accept the license agreement otherwise the installation cannot be continued for legal reasons. Please read the license text carefully. If you accept the license agreement you can continue the installation by clicking the **Next** button.



The next figure shows the installation type selection. Here you can specify how the Digester software shall be installed. By default the **Standard installation** is selected where the most important components and the currently selected language is installed. Please select this installation type if you prefer a standard installation without optional components such as multiple languages. Some of the steps shown below can be skipped in this installation mode so that the installation will be completed more quickly (e.g. choosing the directory).

The **Full installation** installs all components available. This includes multiple user languages, manuals, documentation, and additional optional components such as the look & feels. Please select this installation type if you have enough disk space and if you need all features of the Digester software. Some of the steps shown below can be skipped in this installation mode so that the installation will be completed more quickly (e.g. choosing the directory).

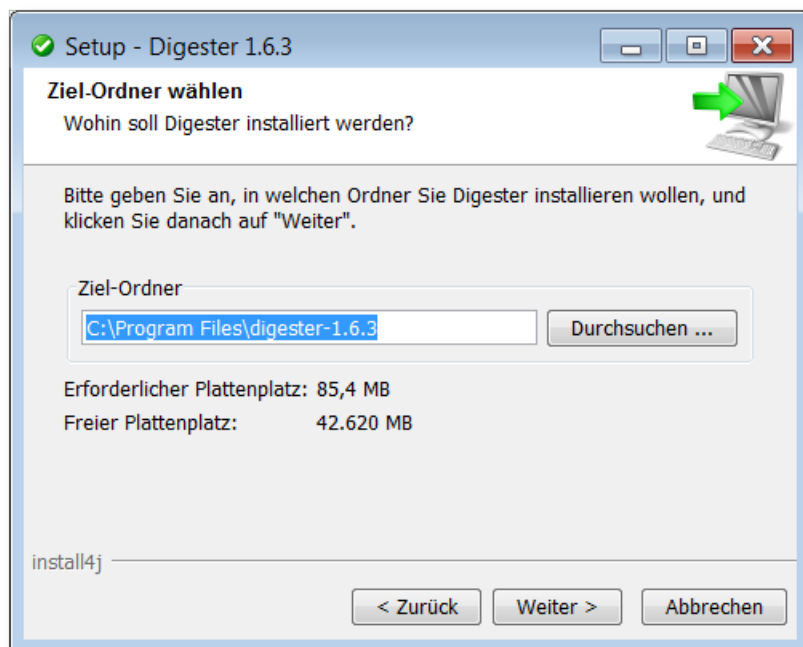
In the following section the **Custom installation** will be presented since this allows for an overview of all available mandatory and optional components. This installation type is often used by system administrators with a detailed knowledge of existing resources and the user's requirements.



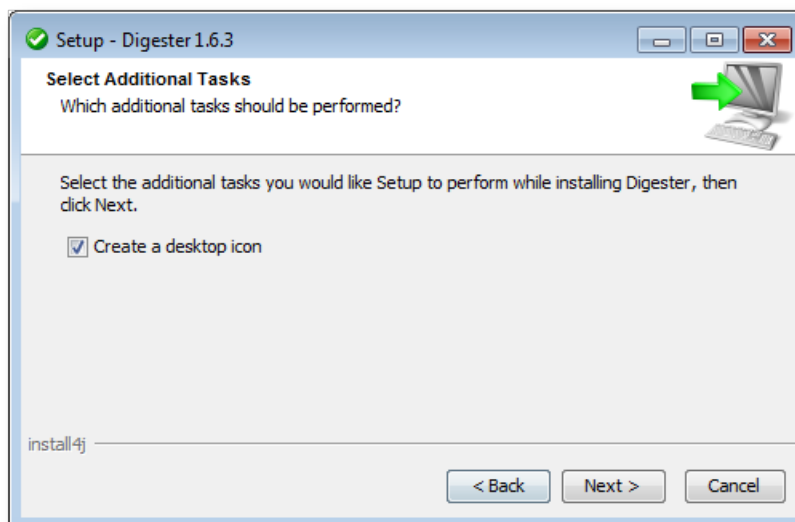
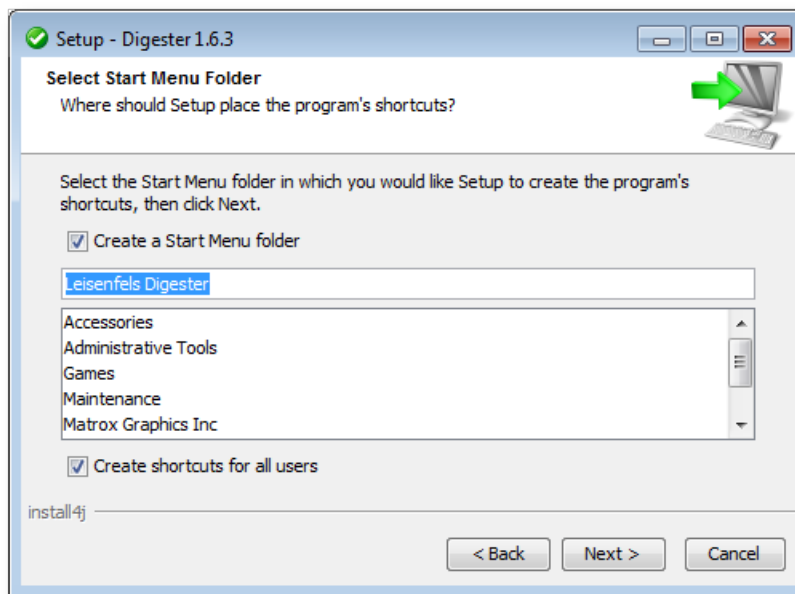
The Digester software consists of several components some of which are necessary for the operation (here summarized under the heading **Digester Application**) and optional components. The **Optional Packages** include the available look & feels determining the appearance of the application. Here the additional look & feels **JTattoo** and **Alloy** are available for selection. Both components are selected by default because the installation is recommended. If you only need the standard look & feels of Java then you can deselect these options by clicking with the mouse. The **Network Protocols** may be deactivated if you don't plan to access remote computers with the Digester software.

By default, the same language for the Digester software is installed which has been selected for the installer (see above). It can make sense to install additional languages e.g. on terminal servers with multilingual users. Currently you can choose English and German here. All languages can be installed simultaneously and like the look & feels be configured on a per user basis. When changed, a restart of the application is necessary. For each language pack also the manual (PDF) in the desired language can be installed.

Then you can select the target folder for the installation. The installer suggests a typical directory for the Windows operating system. This directory can be changed to any directory with enough space available. The space required for installation based on the previous selection of components is displayed below the directory input field in comparison with the available disk space. If there is no adequate space available then a warning is displayed.

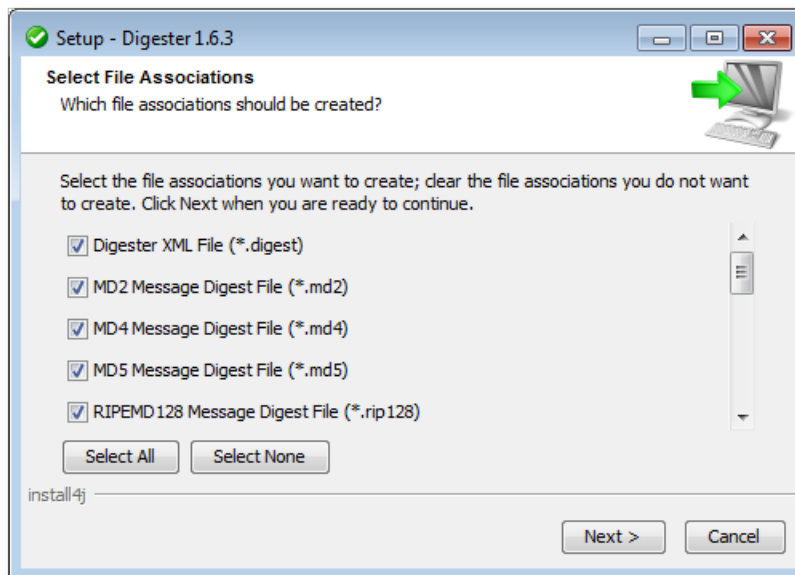


Under Windows a program group for the Digester software can be defined where the programs and resources can be started from. The creation of a program group is recommended but the executable files can alternatively be added to an existing program group. You can also choose here whether shortcuts for all users shall be created or not. Program shortcuts are the symbols within the program group the Digester software can be started with. If you only want shortcuts being created for the current user then deselect the option **Create shortcuts for all users**. If no program group in the Windows Start Menu shall be created you can deselect the option **Create a Start Menu folder**.

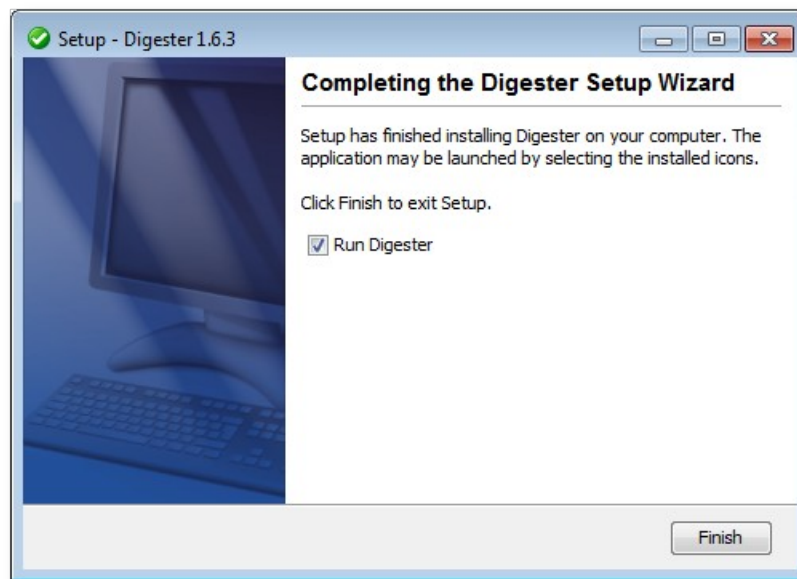


If a desktop icon shall be created, you must select the option shown by the next figure. The Digester software can be easily started with desktop icons without the need to navigate to the program group. All information necessary for the installation have now been gathered, a click on the **Next** button starts the installation. During the installation a special screen informs you about the installation progress. Error messages from the installer software are presented here.

After the successful installation you can specify which files to open automatically with the Digester software. Here are all the file extensions typical for message digest files are listed. If you do not like any of the file extensions be associated with the Digester software then click the **Select None** button. You can also exclude some of the listed file extensions e.g. if you use another software to process MD5 files. The file associations have the advantage that the Digester software can easily be started by double-clicking a file in the Windows Explorer. In addition to that the double-clicked file is automatically processed.



In the last step you can specify whether the Digester software shall be started right now. Click on **Finish**, then the installer will quit and the software is started if configured. Depending on the configuration of the installer, the software can also be started by double clicking the desktop icon or by activating the entries within the program group.



By default, three entries in the program group are created. The shortcut **Digester Uninstaller** can be used to reverse the installation process. Optionally also the local configuration directory created by the Digester software can be removed from the file system (clean uninstall). If you like to uninstall the Digester software, please start the **Digester Uninstaller** program from the program group and follow the instructions of the uninstaller.

The Digester software can also be started by clicking the **Digester 1.6.3** program group entry with the version number depending on the respective installed version. A manual (PDF) has been installed for each selected language which can be opened directly with the **Digester 1.6.3 Manual** shortcut. Please note, that a program such as Adobe Acrobat Reader must be installed to view the manual for the Digester software. You can download this program from <http://www.adobe.com>. If additional components of the Digester software have been installed, the program group may contain additional program icons (for example the German language manual).

For system administrators the installer can also be executed using the command line such as the MS-DOS environment instead of the graphical installation based on dialog windows. Please type the command `start /wait installer.exe -c` (replace `installer.exe` by the installer executable you plan to use). Also the deinstallation can be executed on the command line by typing `start /wait uninstaller.exe -c` in the installation directory.





If the Digester software is installed with the installer including the Java environment the Java resources are not stored within the installation directory of the Digester software, but here:

```
C:\Program Files\Common Files\i4j_jres\
```

The Java environment can also be used by other Leisenfels programs.

## 1.3 Archive for Windows

For Windows operating systems there is an additional option available if the installation with the installers is not possible. The following files may be downloaded from the Leisenfels Internet server where x.x.x must be replaced by the respective program version:

<code>digester-x.x.x-windows.zip</code>	Compressed archive for Windows 32-bit
<code>digester-x.x.x-windows-x64.zip</code>	Compressed archive for Windows 64-bit

Please note that also this installation variant does not include a Java runtime environment which needs to be installed prior to the installation of the software. For more information on this subject please refer to the section [System Requirements](#).

It is recommended that you download Java from the Oracle, Inc. Internet site <http://www.oracle.com>. Please note that this website is only available in English language. Alternatively you can visit the German language web pages <http://www.java.com/de>. You can easily check whether an appropriate Java environment for the Digester software is already installed or not. Enter the command `java -version` and ENTER. If a version number for a suitable Java environment is displayed then the installation can be continued as described.

Many of the recent Windows operating systems already include decompression tools for ZIP archives. You may also use one of the commercial tools like WinZip or free tools like Filzip.

You can find numerous executables within the installation directory. The Digester executable can be directly started from MS-DOS by typing the command `Digester`. You can uninstall the software by using the `rmdir` command under MS-DOS or use the more convenient delete function of the Windows Explorer program.

A manual (PDF) has been installed for each selected language which can be opened directly with the `Manual-eng_US` executable. Please note, that a program such as Adobe Acrobat Reader must be installed to view the manual for the Digester software. You can download this program from <http://www.adobe.com>. If additional components of the Digester software have been installed, the installation directory may contain additional program icons (for example the German language manual executable).

## 1.4 Installer for Mac OS

For Apple Mac OS systems one of the DMG installers may be used to install the Digester software. The file `digester-x.x.x-macos.dmg` allows to install the software graphically. It is automatically started by the operating system after the download has been completed. For system administrators the installer can also be executed using the command line such as the shell instead of the graphical installation based on dialog windows. The installer executables can therefore be started with the `-c` option. On newer Mac OS systems with 64-bit support please install `digester-x.x.x-macos-x64-with-jre.dmg`.

<code>digester-x.x.x-macos.dmg</code>	Installer for Mac OS no Java
<code>digester-x.x.x-macos-x64-with-jre.dmg</code>	Installer for Mac OS 64-bit incl. Java

Since the first installer for Mac OS does not contain a Java runtime environment it needs to be installed prior to the installation of the Digester software. Since the system version 10.6 (Snow Leopard) a suitable Java runtime environment is shipped as part of the operating system. Other runtime environments like Oracle JRE/JDK are currently not available.

You can easily check whether an appropriate Java environment for the Digester software is already installed or not. Enter the shell command `java -version` and ENTER. If a version number for a suitable Java environment is displayed then the installation can be continued as described.

The following section describes the installation using the file `digester-x.x.x-macos.dmg` where `x.x.x` must be replaced by the respective program version. It may be downloaded from the Leisenfels Internet server, the system will start the installation automatically. If not, please start the installation manually by clicking the appropriate desktop icon or open the downloaded file with the Finder application.

First you can choose the language for the installation. Currently **English** and **German** are available. The selection at this point also influences the following steps while the installer assumes that the language selected here shall be used as the user language for the Digester software as well.



In the next step it is necessary to accept the license agreement otherwise the installation cannot be continued for legal reasons. Please read the license text carefully. If you accept the agreement you can continue the installation by clicking the **Next** button.

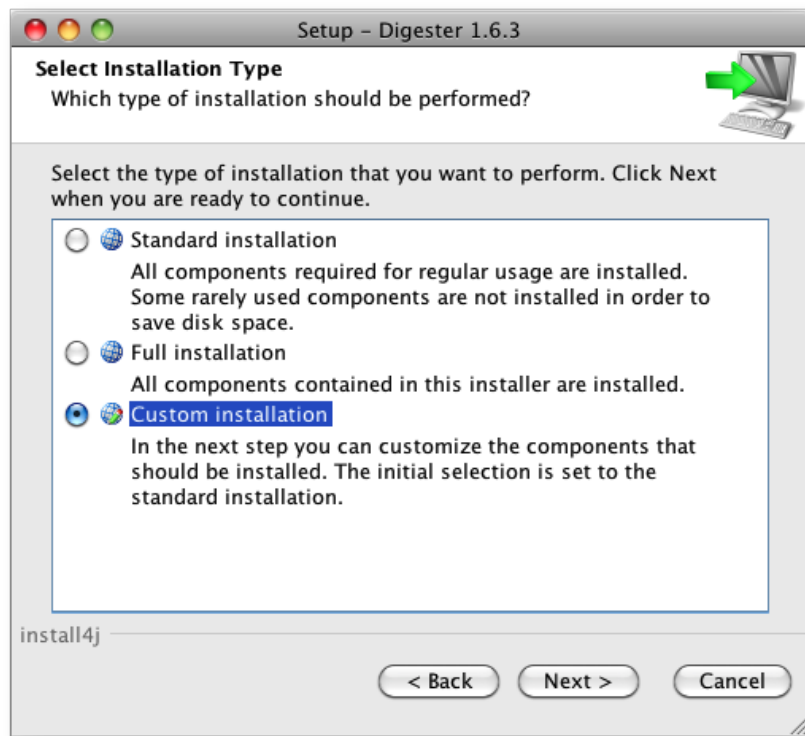


The next figure shows the selection of the installation type. Here you can specify how the Digester software shall be installed. By default the **Standard installation** is selected where the most important components and the currently selected language is installed. Please select this installation type if you prefer a standard installation without optional components such as multiple languages. Some of the steps shown below can be skipped in this installation mode so that the installation will be completed more quickly (e.g. choosing the directory).

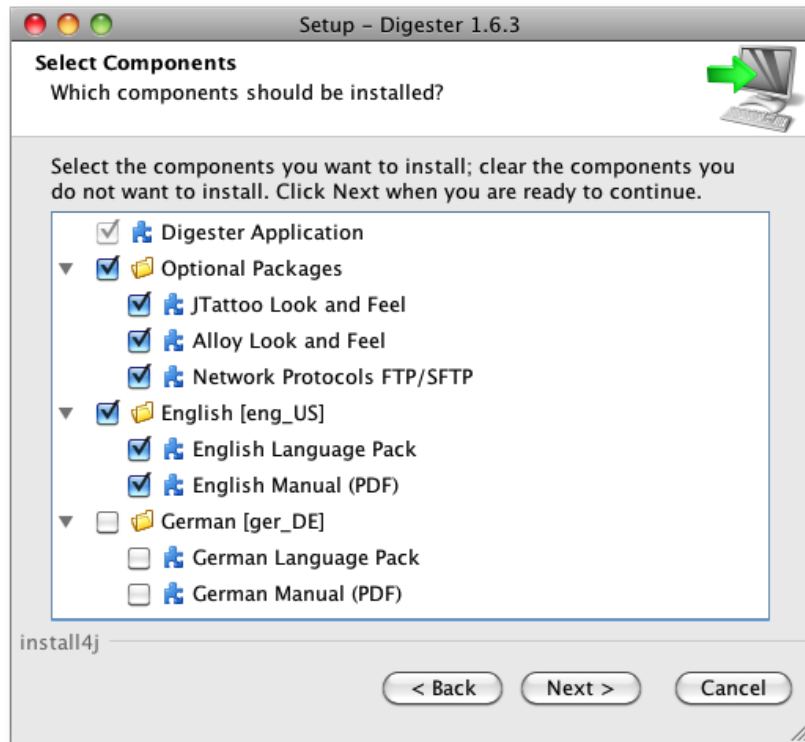
The **Full installation** installs all components available. This includes multiple user languages, manuals, documentation, and additional optional components such as the look & feels. Please select this installation type if you have enough disk space and if you need all features of the

Digester software. Some of the steps shown below can be skipped in this installation mode so that the installation will be completed more quickly (e.g. choosing the directory).

In the following section the **Custom installation** will be presented since this allows for an overview of the available mandatory and optional components. This installation type is often used by system administrators with a detailed knowledge of existing resources and the user's requirements.

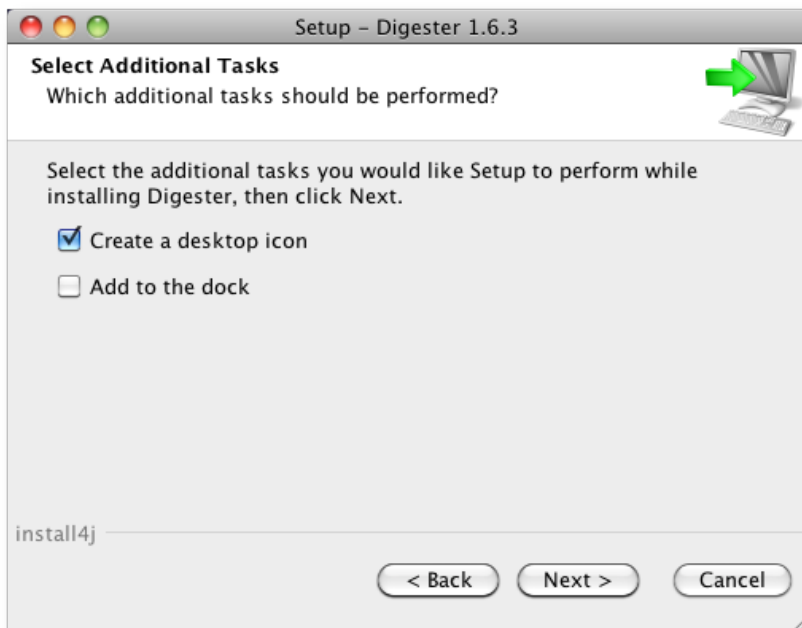
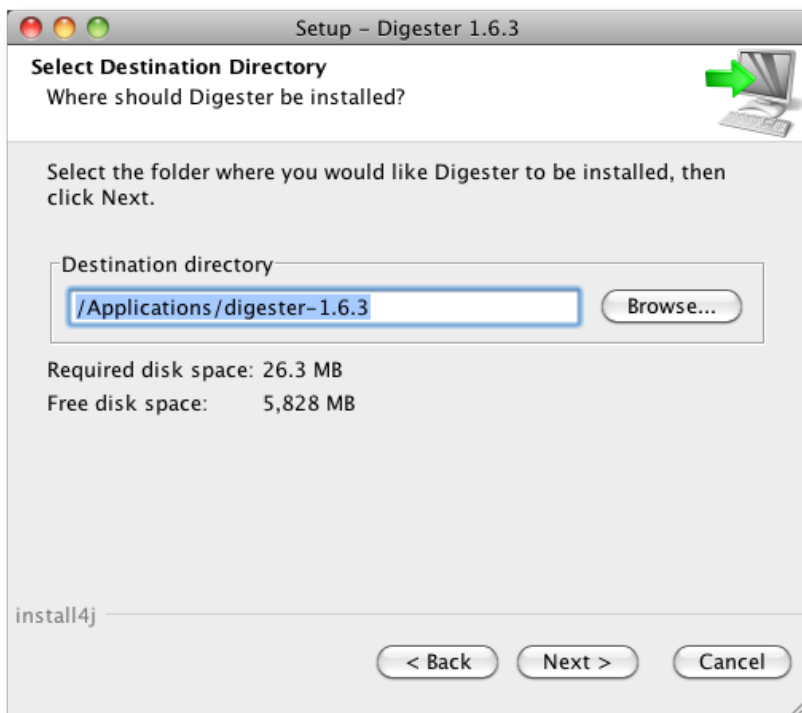


The Digester software consists of individual components some of which are necessary for the operation (here summarized under the heading **Digester Application**) and optional components. The **Optional Packages** include the available look & feels determining the appearance of the application. Here the additional look & feels **JTattoo** and **Alloy** are available for selection. Both components are selected by default because the installation is recommended. If you only need the standard look & feels of Java then you can deselect these options by clicking with the mouse. The **Network Protocols** may be deactivated if you don't plan to access remote computers with the Digester software.



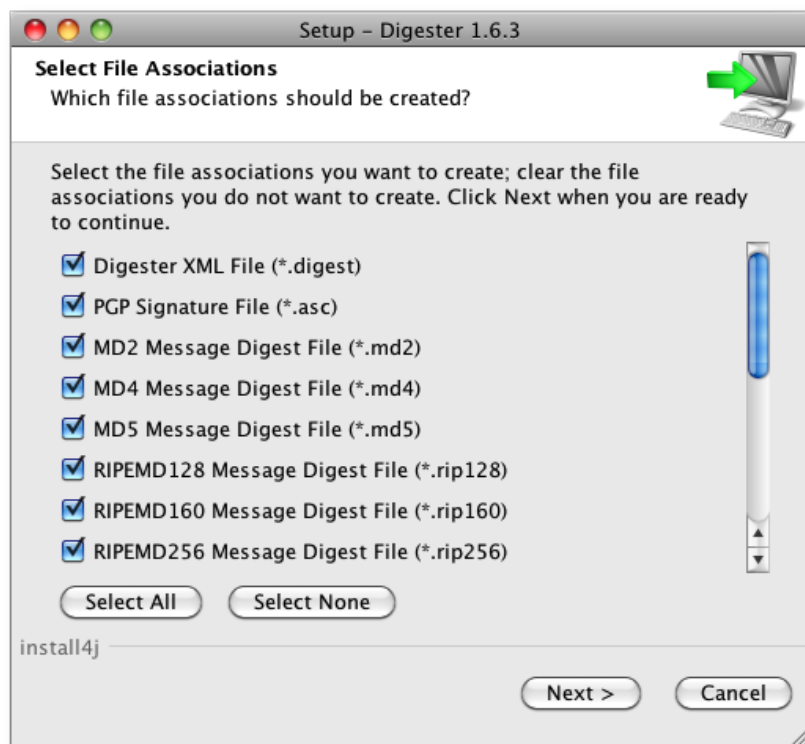
By default, the same language for the Digester software is installed which has been selected for the installer (see above). It can make sense to install additional languages e.g. on terminal servers with multilingual users. Currently you can choose English and German here. All languages can be installed simultaneously and like the look & feels be configured on a per user basis. When changed, a restart of the application is necessary. For each language pack also the manual (PDF) in the desired language can be installed.

Then you can select the target folder for the installation. The installer suggests a typical directory for the operating system. This directory can be changed to any directory with enough space available. The space required for installation based on the previous selection of components is displayed below the directory input field in comparison with the available disk space. If there is no adequate space available then a warning is displayed.



If a desktop icon shall be created, you must select the option shown by the next figure. The Digester software can be easily started with desktop icons without the need to navigate to the program group. Optionally, the Digester software may be added to the dock here. All information necessary for the installation have now been gathered, a click on the **Next** button starts the installation. During the installation a special dialog shows the installation progress. Error messages from the installer software are presented here.

After the successful installation you can specify which files to open automatically with the Digester software. Here are all the file extensions typical for message digest files are listed. If you do not like any of the file extensions be associated with the Digester software then click the **Select None** button. You can also exclude some of the listed file extensions e.g. if you use another software to process MD5 files. The file associations have the advantage that the Digester software can easily be started by double-clicking a file in the Windows Explorer. In addition to that the double-clicked file is automatically processed.



In the last step you can specify whether the Digester software shall be started right now. Click on **Finish**, then the installer will quit and the software is started if configured. Depending on the configuration of the installer, the software can also be started by double clicking the desktop icon or by activating the dock icon.



You can find numerous executables within the installation directory. The Digester executable can be directly started from a shell by typing the command `./digestergui`. If you like to uninstall the Digester software, please start the Digester uninstaller executable from the Finder application and follow the instructions of the uninstaller. Optionally, also the local configuration directory created by the Digester software can be removed from the file system (clean uninstall). You may uninstall the software also directly from the command line with the command `open „Digester Uninstaller.app“` executed in the installation directory.

A manual (PDF) has been installed for each selected language which can be opened directly with the `Manual-eng_US` executable. Please note, that a program such as Adobe Acrobat Reader must be installed to view the manual for the Digester software. You can download this program from <http://www.adobe.com>. If additional components of the Digester software have been installed, the installation directory may contain additional program icons (for example the German language manual).

For system administrators the installer can also be executed using the command line such as the shell instead of the graphical installation based on dialog windows. The installer executable can therefore be started with the `-c` option.



## 1.5 Installer for Linux/UNIX

For the Digester installation under Linux the files `digester-x.x.x-linux-with-jre.sh` (32-bit) and `digester-x.x.x-linux-x64-with-jre.sh` (64-bit) can be used where both files already include a suitable Java environment. The easiest way is to download the file `digester-x.x.x-linux-with-jre.sh` including all required programs and files to run the Digester software under Linux operating systems for 32/64-bit. If an appropriate Java environment is already installed on your system you may alternatively use the installer `digester-x.x.x-unix.sh` which is described below. The files including Java can be installed the same way as the UNIX installer.

The installation under Linux/UNIX operating systems can be done using a universal installer. The file `digester-x.x.x-unix.sh` allows to install the software graphically. It can be started from the shell. For system administrators the installer can also be executed using the command line such as the shell instead of the graphical installation based on dialog windows. The installer executables can therefore be started with the `-c` option.

<code>digester-x.x.x-linux-with-jre.exe</code>	Installer for Linux 32-bit incl. Java
<code>digester-x.x.x-linux-x64-with-jre.exe</code>	Installer for Linux 64-bit incl. Java
<code>digester-x.x.x-unix.sh</code>	Installer for Linux/UNIX

Since this installer for Linux/UNIX does not contain a Java runtime environment it needs to be installed prior to the installation of the Digester software. Many popular Linux/UNIX operating systems are already shipped with an appropriate Java environment.

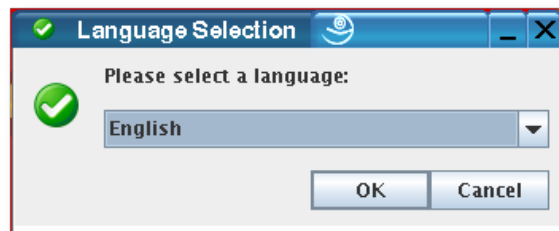
It is recommended that you download Java from the Internet site of Oracle, Inc. at <http://www.oracle.com>. Please note that this website is only available in English language. Alternatively you can visit the German language web pages <http://www.java.com/de>. You can easily check whether an appropriate Java environment for the Digester software is already installed or not. Enter the command `java -version` and ENTER. If a version number for a suitable Java environment is displayed then the installation can be continued as described below.

The following section describes how to install the software Digester with the `digester-x.x.x-unix.sh` file where `x.x.x` must be replaced by the respective program version. Please download this file from the Leisenfels Internet server and save it into a directory on the target machine. Open a shell, navigate to that directory and run this command (replace `x.x.x` by the current version again):

```
sh digester-x.x.x-unix.sh
```

If a suitable Java environment and a graphical environment (X server) is available, the following dialogs are presented.

First you can choose the language for the installation. Currently **English** and **German** are available. The selection at this point also influences the following steps while the installer assumes that the language selected here shall be used as the user language for the Digester software as well.



In the next step it is necessary to accept the license agreement otherwise the installation cannot be continued for legal reasons. Please read the license text carefully. If you accept the agreement you can continue the installation by clicking the **Next** button.

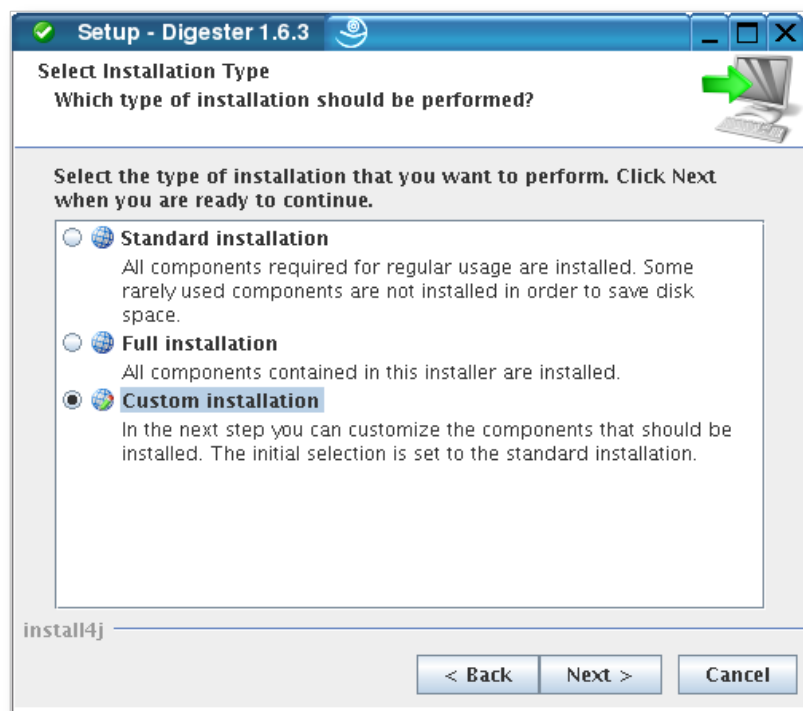


The next figure shows the selection of the installation type. Here you can specify how the Digester software shall be installed. By default the **Standard installation** is selected where the most important components and the currently selected language is installed. Please select this installation type if you prefer a standard installation without optional components such as

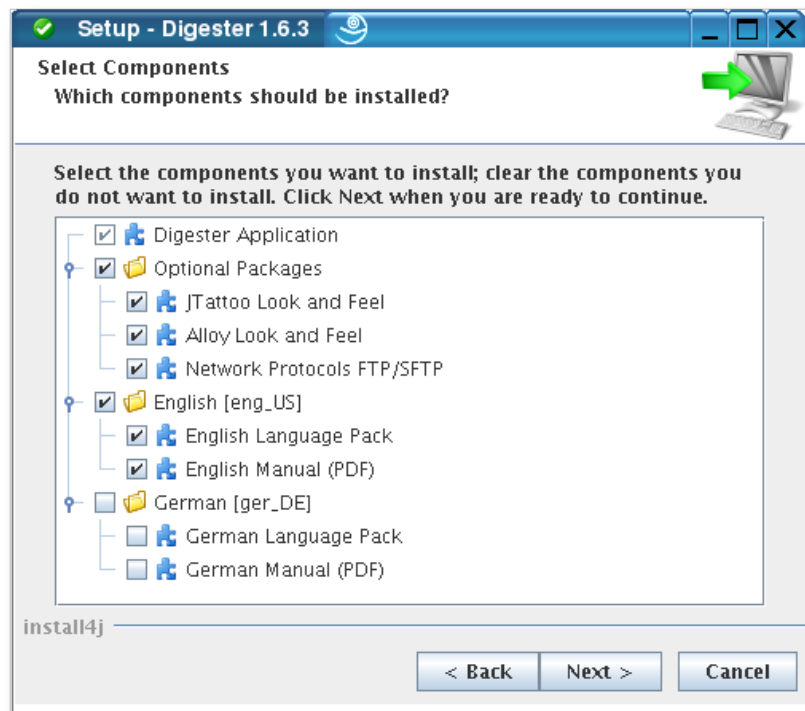
multiple languages. Some of the steps shown below can be skipped in this installation mode so that the installation will be completed more quickly (e.g. choosing the directory).

The **Full installation** installs all components available. This includes multiple user languages, manuals, documentation, and additional optional components such as look & feels. Please select this installation type if you have enough disk space and if you need all features of the Digester software. Some of the steps shown below can be skipped in this installation mode so that the installation will be completed more quickly (e.g. choosing the directory).

In the following section the **Custom installation** will be presented since this allows for an overview of the available mandatory and optional components. This installation type is often used by system administrators with a detailed knowledge of existing resources and the user's needs.



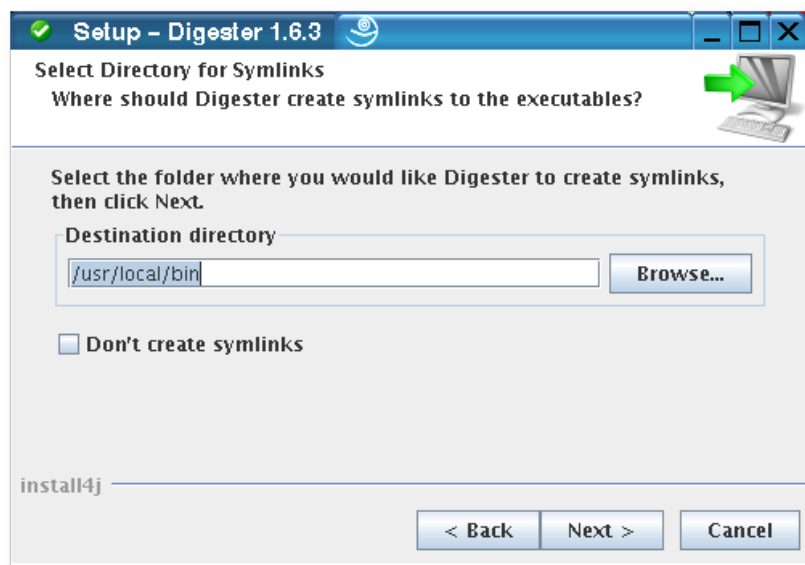
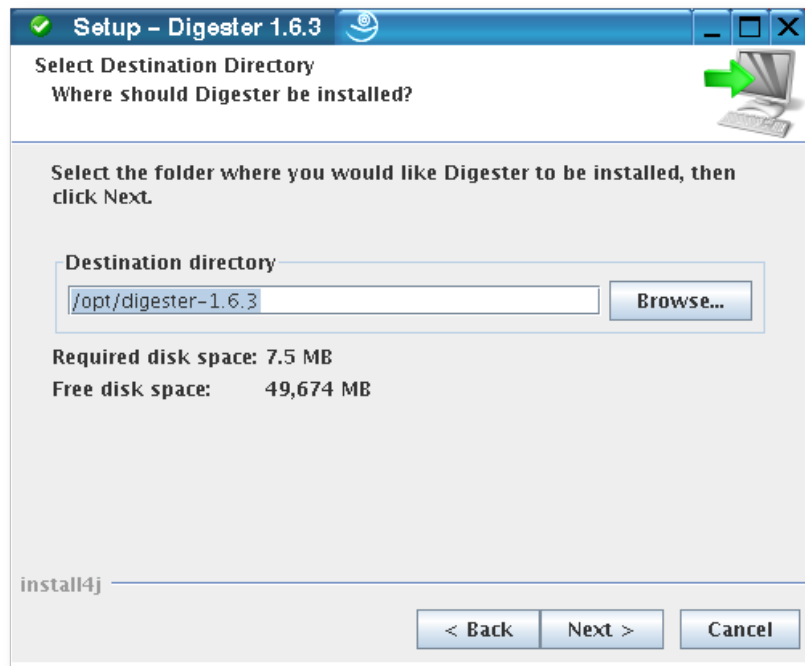
The Digester software consists of individual components some of which are necessary for the operation (here summarized under the heading **Digester Application**) and optional components. The **Optional Packages** include the available look & feels determining the appearance of the application. Here the additional look & feels **JTattoo** and **Alloy** are available for selection. Both components are selected by default because the installation is recommended. If you only need the standard look & feels of Java then you can deselect these options by clicking with the mouse. The **Network Protocols** may be deactivated if you don't plan to access remote computers with the Digester software.



By default, the same language for the Digester software is installed which has been selected for the installer (see above). It can make sense to install additional languages e.g. on terminal servers with multilingual users. Currently you can choose English and German here. All languages can be installed simultaneously and like the look & feels be configured on a per user basis. When changed, a restart of the application is necessary. For each language pack also the manual (PDF) in the desired language can be installed.

Then you can select the target folder for the installation. The installer suggests a typical directory for the operating system. This directory can be changed to any directory with enough space available. The space required for installation based on the previous selection of components is displayed below the directory input field in comparison with the available disk space. If there is no adequate space available then a warning is displayed.

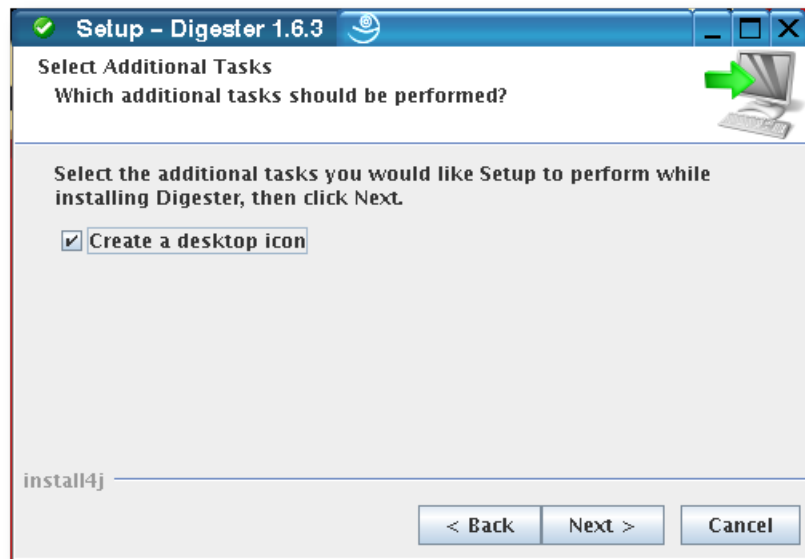
Under Linux/UNIX a directory of symlinks for the Digester software can be defined. The creation of symlinks is recommended so that the applications can be executed comfortably from the access path. If you do not like symlinks being created please select the **Don't create symlinks** option.



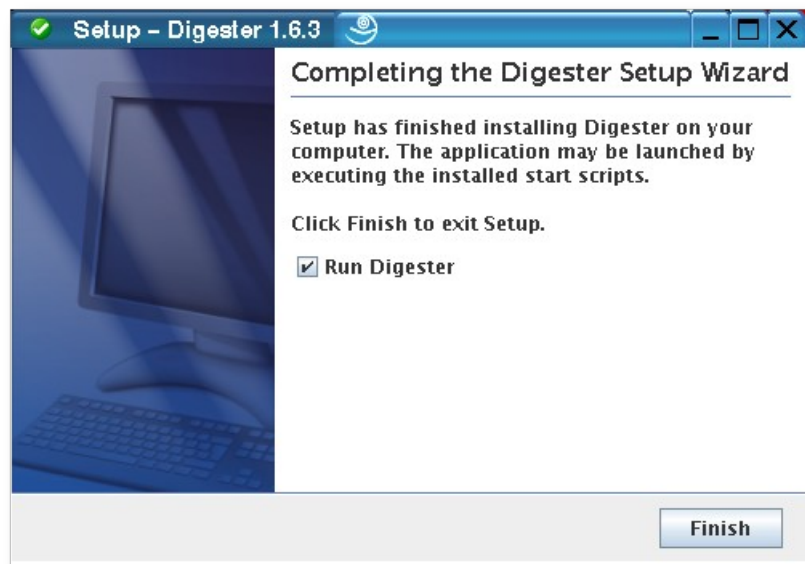
If a desktop icon shall be created, you must select the option shown by the next figure. The Digester software can be easily started with desktop icons without the need to navigate to the program group. Optionally, the Digester software may be added to the dock here. All information necessary for the installation have now been gathered, a click on the **Next** button starts the installation. During the installation a special dialog shows the installation progress. Error messages from the installer software are presented here.



Please note, that not all Linux/UNIX operating systems support desktop icons, so that this step may be omitted by the installer or no desktop icons are created. Please create a desktop icon manually on such systems.



In the last step you can specify whether the Digester software shall be started right now. Click on **Finish**, then the installer will quit and the software is started if configured. Depending on the configuration of the installer, the software can also be started by double clicking the desktop icon or by activating the dock icon.



You can find numerous executables within the installation directory. The Digester executable can be directly started from a shell by typing the command `./digestergui`. You can uninstall the software by starting the `uninstall` executable. Optionally also the local configuration directory created by the Digester software can be removed from the file system (clean uninstall). If you like to uninstall the Digester software, please type the command `./uninstall` and follow the instructions of the uninstaller.

A manual (PDF) has been installed for each selected language which can be opened directly with the `Manual-eng_US` executable. Please note, that a program such as Adobe Acrobat Reader must be installed to view the manual for the Digester software. You can download this program from <http://www.adobe.com>. If additional components of the Digester software have been installed, the installation directory may contain additional program icons (for example the German language manual executable).

For system administrators the installer can also be executed using the command line such as the shell instead of the graphical installation based on dialog windows. The installer executable can therefore be started with the `-c` option. Also the uninstallation can be executed using the command line by typing `uninstall -c` in the installation directory.

## 1.6 Archive for Linux/UNIX

For Windows operating systems there is an additional option available if the installation using one of the installers is not possible. The file `digester-x.x.x-unix.tar.gz` may be downloaded from the Leisenfels Internet server where `x.x.x` must be replaced by the respective program version:

`digester-x.x.x-unix.tar.gz`                      Compressed archive Linux/UNIX

Please note that also this installation variant does not include a Java runtime environment which needs to be installed prior to the installation of the software. For more information on this subject please refer to the section [System Requirements](#). Please note, that this documentation does not focus on single operating system versions since very many Linux/UNIX products are available on the market today.

It is recommended that you download Java from the Internet site of Oracle, Inc. at <http://www.oracle.com>. Please note that this website is only available in English language. Alternatively you can visit the German language web pages <http://www.java.com/de>. You can easily check whether an appropriate Java environment for the Digester software is already installed or not. Enter the command `java -version` and ENTER. If a version number for a suitable Java environment is displayed then the installation can be continued as described below.

Start a shell and navigate to the directory containing the downloaded archive file and execute the following command (replace x.x.x by the respective version). If necessary, consult the manual or man page shipped with the decompression tool on your system. Most Linux/UNIX operating systems are already shipped with decompression programs for TAR archives so that a separate installation is usually not necessary. Execute the following command:

```
tar -xvzf digester-x.x.x-unix.tar.gz
```

The compressed archive should be unpacked. By default, all resources contained are extracted into a subdirectory named `digester-x.x.x` (replace x.x.x by the respective version again).

You can find numerous executables within the installation directory. The Digester executable can be directly started from a shell by typing the command `./digestergui`. If you like to uninstall the Digester software, you can use the well-known `rm` command from the shell. Like for Windows operating systems you may use graphical file navigators like Konqueror for this.

A manual (PDF) has been installed for each selected language which can be opened directly with the `Manual-eng_US` executable. Please note, that a program such as Adobe Acrobat Reader must be installed to view the manual for the Digester software. You can download this program from <http://www.adobe.com>. If additional components of the Digester software have been installed, the installation directory may contain additional program icons (for example the German language manual executable).

## 1.7 RPM Package

The RPM package (`.rpm`) may be used on systems with RPM support like SuSE or Red Hat. This package does not include a suitable Java environment which must be installed separately.

The following package file is currently available for download where x.x.x must be replaced by the respective program version:

```
digester-x.x.x-linux.rpm           Package for Linux with RPM support
```

To install the Digester software from the RPM package into the `/opt` directory, to list the contents of the RPM archive, or to uninstall the software please use the following commands from a shell:

```
rpm -i digester-x.x.x-linux.rpm     Install into /opt
rpm -qvlp digester-x.x.x-linux.rpm  List the package contents
rpm -e digester                      Uninstall the software
```



On your Linux system, a more convenient way may exist to install the software from the RPM package. Please consult your administrator or the operating system documentation to find the best way to install RPM packages on your system. To list the RPM package contents please execute the following command (no installation):

```
rpm -qvp digester-x.x.x-linux.rpm
```

## 1.8 Debian Package

On Debian systems the Debian package (.deb) may be used to install the Digester software.

The following package file is currently available for download where x.x.x must be replaced by the respective program version:

<code>digester-x.x.x-linux.deb</code>	Package for Debian
---------------------------------------	--------------------

To install the Digester software from the Debian package into the `/opt` directory or to uninstall the software please use the following commands from a shell:

<code>dpkg -i digester-x.x.x-linux.deb</code>	Install on system
<code>dpkg -r digester</code>	Remove from system
<code>dpkg --purge digester</code>	Remove from package cache

On your Linux system, a more convenient way may exist to install the software from the Debian package. Please consult your administrator or the operating system documentation to find the best way to install Debian packages on your system.

## 1.9 Web Start

For users who want to deploy the Digester software on multiple systems without laborious installations the Web Start version is available. Your browser will first download a JNLP file containing the installation instructions for the Digester software. On the basis of the included settings Web Start then installs the software automatically. Here a program icon on the desktop is created like the Windows installer does. Web Start is part of the Java runtime environment which is available for most popular platforms like Windows, Mac OS, Linux or Oracle Solaris, so that the Digester software can be installed fast and easily on these systems.

The Java environment provides the Web Start tool. It is necessary that an appropriate Java environment is installed (see section [System Requirements](#)). It is recommended that you download Java from the Internet site of Oracle, Inc. at <http://www.oracle.com>. Please note, that this website is only available in English language. Alternatively you can visit the German language web pages <http://www.java.com/de>.

Once Java has been installed successfully, the Digester software can be installed by simply clicking a link on the Leisenfels homepage. To do this, please navigate your Internet browser (like Firefox or Internet Explorer) to our website at [www.leisenfels.com](http://www.leisenfels.com) and then go to the product pages for the Digester software. Earlier versions may also be downloaded from the archive. Look for the following icon to install the Web Start version of the Digester software:

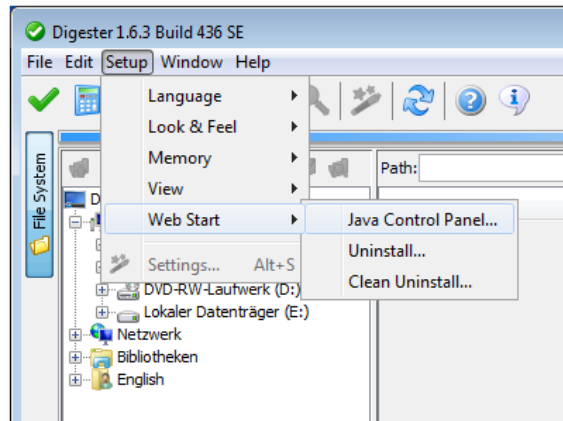


Now you have the choice between an **auto-update version** and a **fixed version**. While the auto-update version is always replaced by newer program versions, the fixed version is nailed to a particular Digester version. The use of a fixed program version makes sense if the software is used in production environments where potential interference caused by newer versions should be strictly avoided. Both versions can be installed and executed simultaneously so that you can use the fixed version for production and testdrive newer versions safely by using the auto-update variant. If and only if a newer version meets your requirements then the newer version should be installed for production use. In some scenarios it may be useful that the latest program versions be used since these often contain improvements and bug fixes.

While the auto-update version checks for available updates every time it is started and then automatically downloads and installs the new version, you have full control over updates by using the fixed version. Therefore more effort is needed to update a fixed program version since you have to visit the Internet site and click on the JNLP link for installation again. The auto-update and fixed versions can be easily distinguished by their names. Auto-update versions normally are titled like **Digester 1.6.x** where x indicates that any sub-versions of the 1.6 major version can be installed. The fixed versions are named like **Digester 1.6.3** etc. while the name contains the full version number. You can also deploy multiple fixed versions of the Digester software simultaneously.

If the Digester software is installed by using Web Start, a permanent Internet connection is required since each time you start the program it looks for newer versions. If a newer version is available, Web Start automatically cares for an update from the Internet server. You have the choice whether or not an automatic update shall be performed or if a fixed program version shall be executed. The most necessary parts of the program are immediately transferred during installation. The modules such as the German language help system are downloaded when needed. Web Start installations must be made on a per user basis while a system-wide installation of the software for all users of a system is not currently possible. Then use the installation via installer instead.

The Web Start version is particularly interesting for those users who use the software on multiple systems or on customer's sites. The Digester software offers special menu items for the complete removal of Web Start installations directly from the running program:



The Java Control Panel can be opened with the menu item **Java Control Panel**. The Java executable javaws must be accessible from the execution path which is normally adjusted by the Java installer automatically. Within the Java Control Panel you can list and remove currently installed applications, view JNLP files, and much more.

With the **Uninstall...** menu function you can remove the Web Start application from the Web Start environment including resources from the local disk. If desktop icons have been installed during Web Start installation these are also removed here. The application of course cannot be started after uninstallation and must then be installed again from the Leisenfels Internet server.

If you also want the configuration directory of the Digester software be deleted on uninstall please activate the **Clean Uninstall...** menu. This allows the software to be quickly installed e.g. on a customer's computer and uninstalled after the work has been done without leaving any files on the system.



Please verify that the configuration directory has been successfully removed when using the **Clean Uninstall...** function since especially Windows systems permit applications to remove files which are currently opened. For instance this is the case for Digester log files.

## 1.10 Web Start Archive

Especially for those users willing to deploy the Web Start version of the Digester software, an additional archive is available which makes the software usable from an own local server. If, for example, a permanent Internet connection is not available then the Web Start version from the Leisenfels server cannot be used. With the Web Start archive of the software you are able to provide the Digester software from an own local Windows or Linux server while the end user

deployment is as easy as if the software would have been installed from the Leisenfels server. The Web Start archive can for example be installed into an Apache Tomcat web container for this purpose.

The following archive files are currently available for download where x.x.x must be replaced by the respective program version:

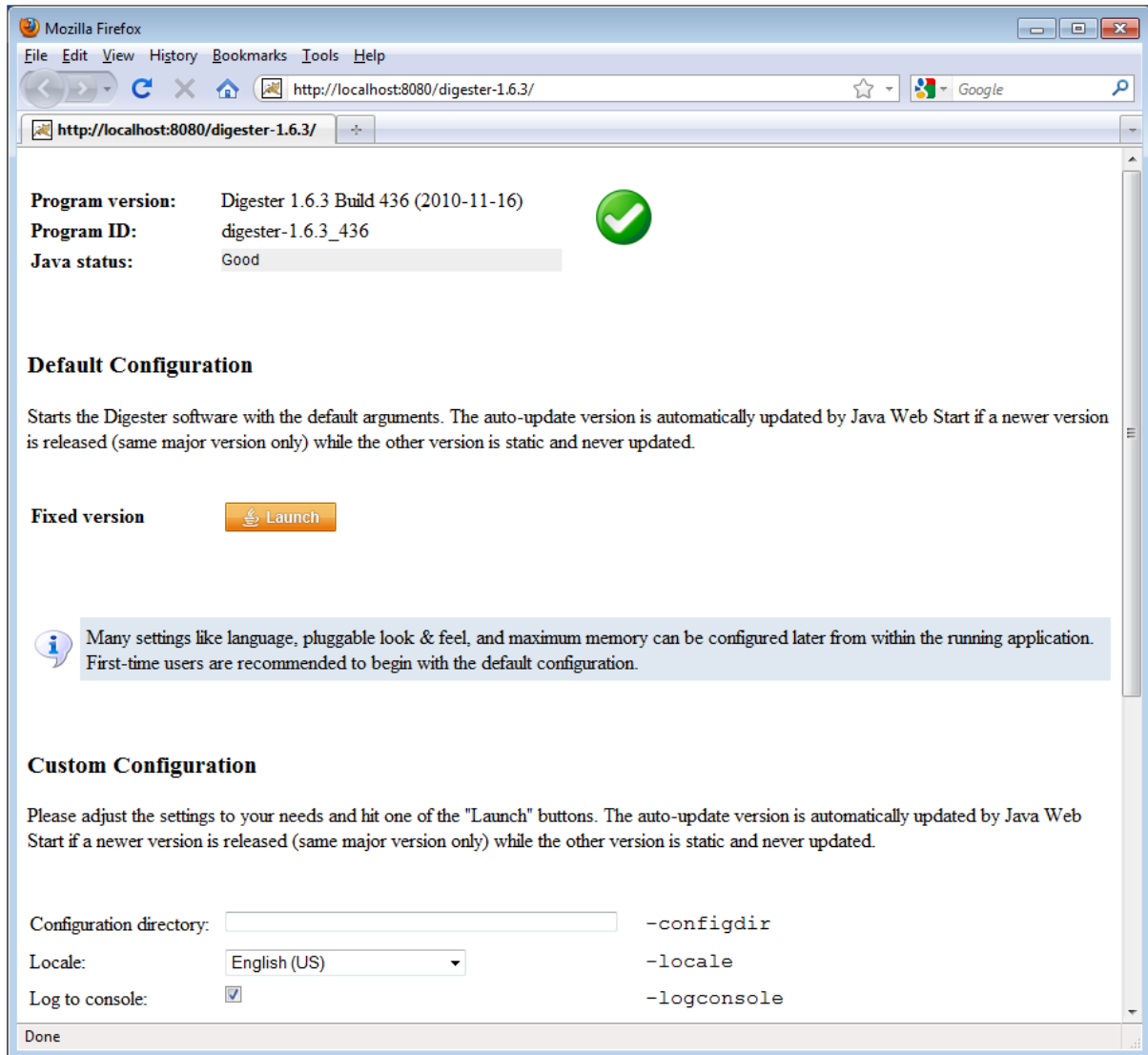
<code>digester-x.x.x.war</code>	Compressed Web Start archive
---------------------------------	------------------------------

For the installation of this archive you can use virtually any compatible web container software like Apache Tomcat 5.5 running with the JRE/SDK 1.6.x by Oracle, Inc. Your choice of operating system to run the web container does not play a role here. The archive has been successfully tested with Apache Tomcat 5.5.27 under Windows XP as well as SuSE Linux SLES 10. The archive installation procedure is very easy: assuming the default configuration of Tomcat you can copy the archive to the `webapps` directory of the Tomcat installation. If autodeploy is enabled (default) then the container automatically recognizes the archive, deflates it, and provides the included web application using the same name as the archive (without `.war`).

For example, you can start the application after the installation from the archive `digester 1.6.3.war` by opening the following address in your Internet browser like Firefox or Internet Explorer where `localhost` and the port 8080 must be replaced by the respective server parameters. The entry page provides numerous configuration settings for the Web Start version of the Digester software and looks pretty much like the corresponding page provided by the Leisenfels download server (see figure).

Please note that the shown user interface is currently only available in English.

You can use any name for the archive files and the web applications so that the applications can be integrated individually into the existing web container infrastructure. The contained servlets analyze the HTTP addresses used for the environment and make sure that the server logic works properly even if the names have been changed.



In order to provide an automatically updated Web Start version, the archive can be renamed to `digester-1.6.x.war` for example before it is deployed by the web container. If the next program version is published then this step can be repeated so that the existing version is always replaced by the newer version. Under UNIX operating systems simple links can be used to configure a version with automatic update in addition to the fixed version without any hard disk space overhead. Under Windows you can copy the fixed version archive and rename the copy as described above to get an additional version with automatic update.

You can find detailed information on the installation and configuration of the Apache Tomcat web container as part of the documentation which you can download from the Internet address <http://apache.org>. If you like to deploy the archive together with other compatible web containers please consult the documentation of your software for the appropriate steps. There are many products on the market available today so that the necessary procedures cannot be

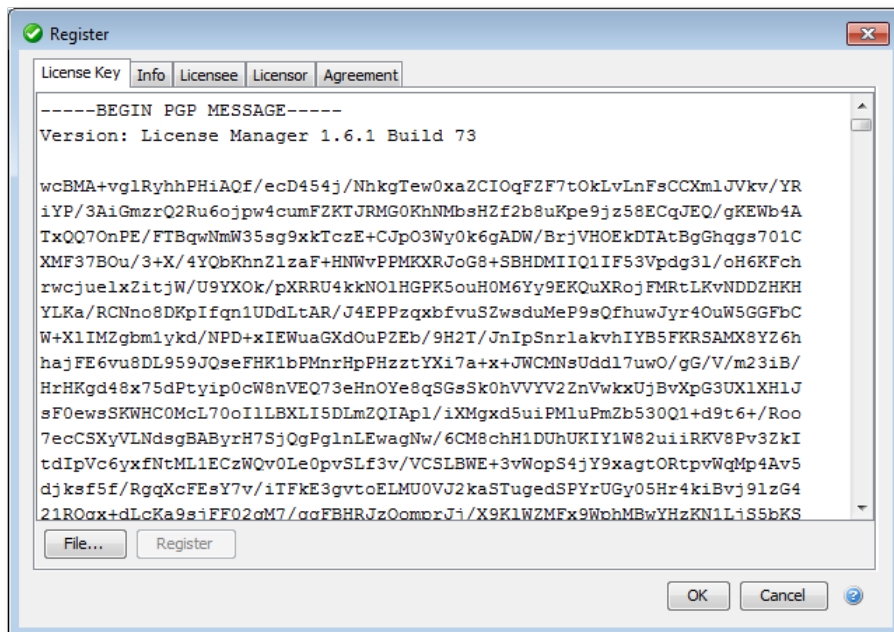
discussed here.

Since modern PCs are quite powerful there is no need for an expensive server in most cases. If only a few users access the Web Start version from the local machine then the Apache web container can also be installed on an average Windows PC from the department.

## 1.11 Register

To deploy the Digester software, a commercial license must be obtained. You can find the available product licenses and terms of use at the [www.leisenfels.com](http://www.leisenfels.com) website. The software can be licensed as a *Single-User License* where the Digester software can be used by a single person also on multiple computers.

After the successful installation as described above the Digester software shows the following dialog when started the first time which prompts you to specify a valid license key:



You can now specify a license key in several ways. If you have already purchased a license or started an evaluation, you have received e mail with the associated license key in the form of a text fragment or as a file attachment.

License files usually are named like `license-DIGEST16BESU-LF-00001267.txt`. Please save this file on your hard disk or copy the text fragment from the e-mail to the clipboard of your operating system. Under Windows this can be done by selecting the text with the mouse and

pressing the key combination **Control+C**. Then switch to the registration dialog and either insert the copied text (under Windows by pressing the key combination **Control+V**) or select the license file by clicking the **File...** button so that the license key is inserted into the text area of the dialog. Once the **Register** button becomes active, please click on this button.

The license will then be decrypted and verified. If the license is valid for the current version, the license details are displayed by the other tabs **Info**, **Licensee**, **Licenser**, and **Agreement**. Please read the license details carefully. In particular you should read the license agreement carefully because this provides the legal framework for the use of the software. If you confirm the dialog with the **OK** button, another dialog will be opened prompting you to accept the license agreement.



If you do not accept, the dialog is closed and the Digester software is terminated because no valid license key is configured. If you do accept the agreement, the dialog is closed and you can use the software from now on. The license will be deposited within the configuration directory and automatically loaded and checked the next time the application is started. If the deposited license key is invalid e.g. because the license has expired you will have to set a valid license as described above.

If you want the Digester software to be improved in the future, we ask you to obtain valid licenses for each deployment of the software and to make sure the license agreement is respected. Thank you very much!