

Battery Manager 1.6.3

Quick Start



**Copyright © 2013-2014 Leisenfels UG (haftungsbeschränkt).
All rights reserved.**

While the information in this manual has been compiled with great care, it may not be deemed an assurance of product characteristics. Leisenfels shall be liable only to the degree specified in the terms of sale and delivery.

The reproduction and distribution of the documentation and software included with this product is subject to written permission by Leisenfels. We reserve the right to make alterations that arise as the result of technical development.

Debian is a registered trademark of Software in the Public Interest, Inc.

Java and Solaris are registered trademarks of Oracle Corporation

Linux is a registered trademark of Linus Thorvalds.

Mac and Mac OS are registered trademarks of Apple, Inc.

MS-DOS, Windows, Windows 95, Windows 98, Windows NT, Windows 2000, Windows XP, Windows 2003, Windows Vista and Windows 7 are registered trademarks of Microsoft, Corp.

PGP and Pretty Good Privacy are registered trademarks of PGP Corporation

UNIX is a registered trademark of X/Open Company Limited.

The name Leisenfels is a registered trademark of Axel Schwolow. All other names mentioned may be trademarks or registered trademarks of their respective owners.

Subject to change without notice. No liability for technical errors or omissions.

Leisenfels UG (haftungsbeschränkt)
Am Langenkamp 11
49143 Bissendorf
Germany

www.leisenfels.com

Bissendorf, 05/06/2015



**THINK B4
YOU PRINT!**

Quick Start

Thank you very much for your decision to use the Battery Manager software!

In order to get the software up and running quickly this section lists the necessary steps. Please read the detailed pieces of information in the installation and user manuals.



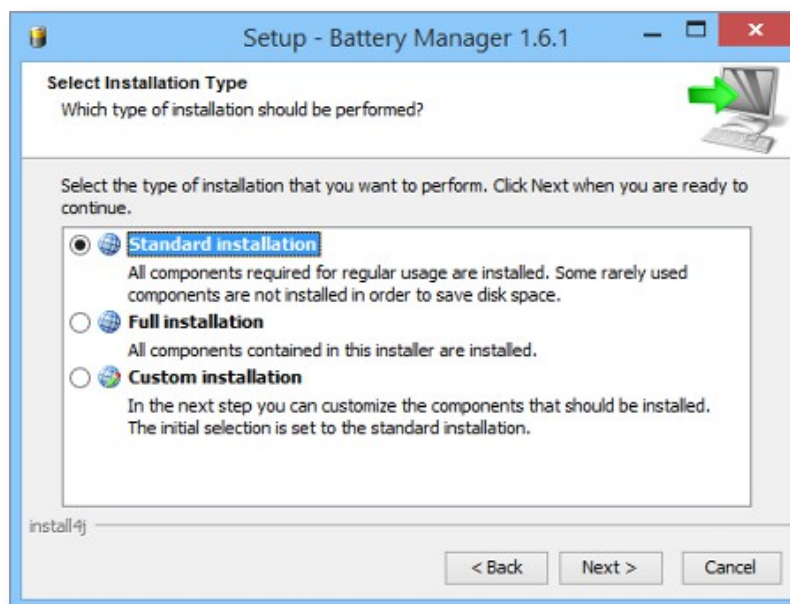
Please connect your devices like chargers, barcode readers etc., which you plan to use with Battery Manager prior to the installation of the software. Please take a look at the device manuals for the steps necessary to operate the devices (i.e. installation of specific drivers, settings like baud rate and parity for RS-232 ports).

- **Step 1:** Installation of the software
- **Step 2:** Register your license
- **Step 3:** Configuration of database and devices
- **Step 4:** Create your own batteries

Step 1: Installation of the software

Please download an installer for your operating system from the [Battery Manager Homepage](#). Most Windows users are recommended to click the link **Setup Executable** right after **Windows 32-bit**. Please accept the license agreement on top first.

Additional installers or archives exist for many other operating systems.



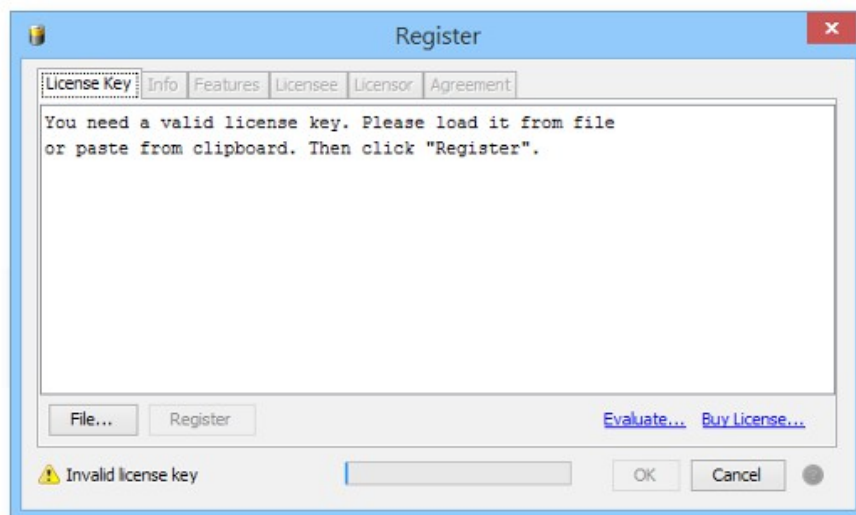
Store the download for example on your desktop and execute it afterwards, follow the dialog steps as demanded. The easiest way is the **Standard installation** (see figure). The Battery Manager starts automatically afterwards.

Step 2: Register you license

If you have obtained a commercial license for Battery Manager you can find the license key for the registration in the e-mail which has been sent to you right after the purchase (titled like "Your license key(s) for order LEI").

Please save the attachment of this e-mail for example on your desktop and choose this file after clicking the **File** button of the register dialog (see figure). Close the dialog with **OK**. Once you have accepted the license agreement you can work with the program.

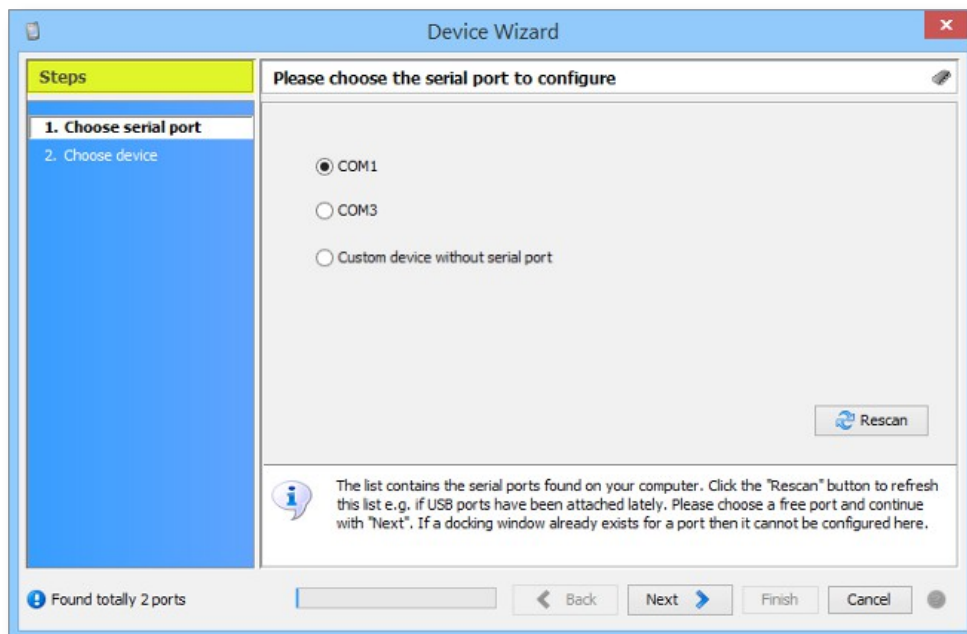
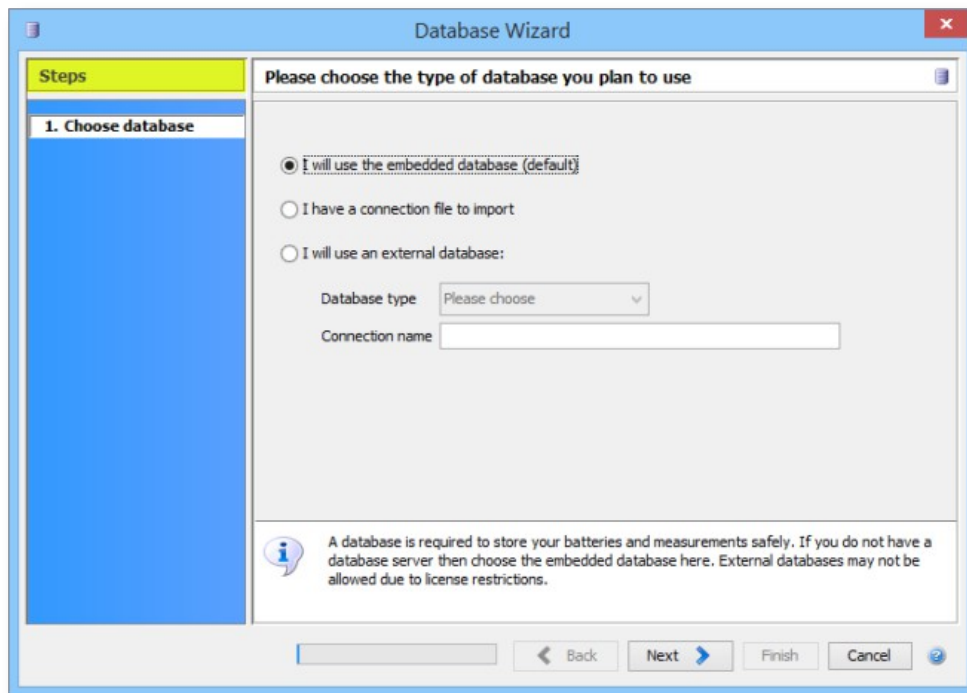
If you like to evaluate the software first then please click the blue **Evaluate** link. An evaluation license is valid for 30 days, the software may be tested without functional limitations.



Step 3: Configuration of database and devices

After the software registration the database wizard is displayed automatically (see next figure). The easiest way is to use the embedded database here which is shipped as part of the software. Continue with **Next** and close the dialog with **Finish**. The embedded data is now up and running, a database session has been created for you.

If you like to use an external database like Oracle or MySQL please refer to the connection management section in the user manual.



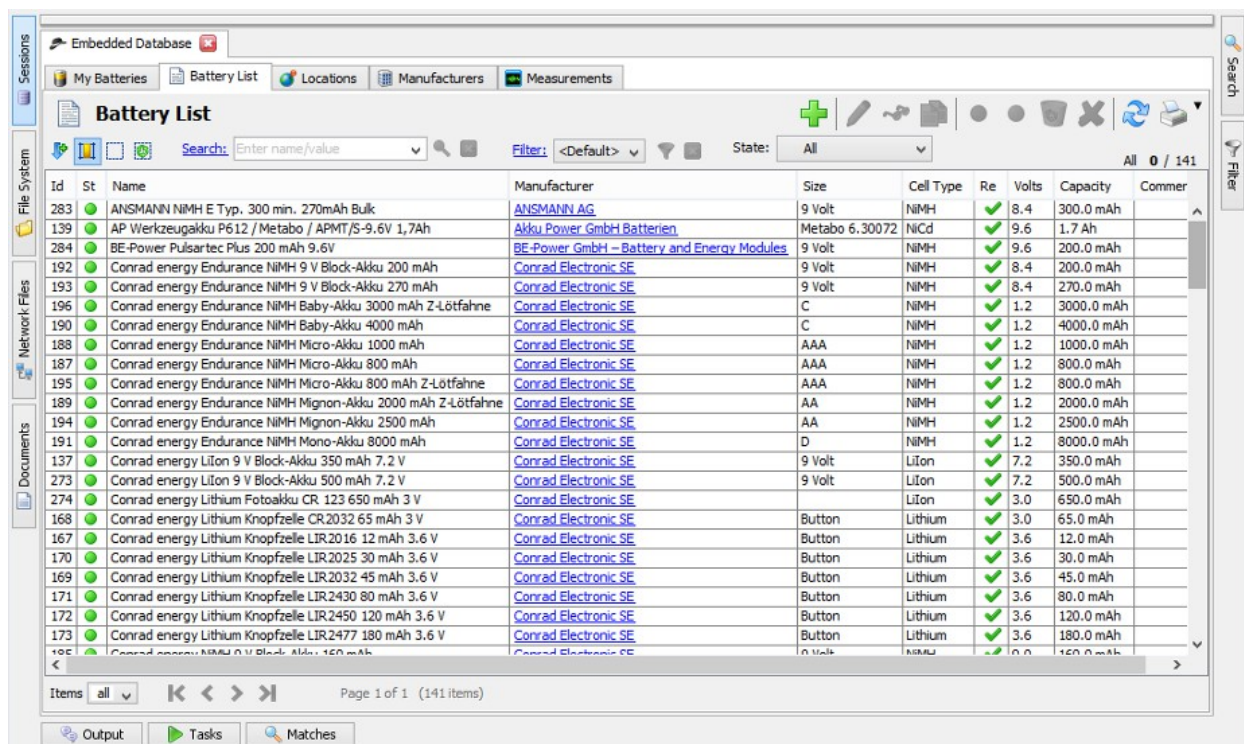
Now the Battery Manager shows the device wizard automatically. Please choose a serial port here where you have connected the charging device etc. and continue with **Next**. The table shows the preconfigured devices, please choose an appropriate device like Charge Manager 2020 here and close the dialog with **Finish**.

A new docking window will be created for each configured device. A good place for device windows is right beside the main window. Please move the device window by dragging it to the desired position.

Repeat these steps for additional databases or devices by calling the respective wizard with the **Devices** and **Database** menus found in the main window of the software.

Step 4: Create your own batteries

The database session in the main window shows the preinstalled **Battery List** with batteries available on the market (see figure). Please activate the **My Batteries** tab now and click the plus symbol in the right upper corner to create a new battery of your own.



Id	St	Name	Manufacturer	Size	Cell Type	Re	Volts	Capacity	Commer
283	●	ANSMANN NIMH E Typ. 300 min. 270mAh Bulk	ANSMANN AG	9 Volt	NIMH	✓	8.4	300.0 mAh	
139	●	AP Werkzeuggakk P612 / Metabo / APMT/S-9.6V 1,7Ah	Akku Power GmbH Batterien	Metabo 6.30072	NiCd	✓	9.6	1.7 Ah	
284	●	BE-Power Pulsartec Plus 200 mAh 9.6V	BE-Power GmbH – Battery and Energy Modules	9 Volt	NIMH	✓	9.6	200.0 mAh	
192	●	Conrad energy Endurance NIMH 9 V Block-Akku 200 mAh	Conrad Electronic SE	9 Volt	NIMH	✓	8.4	200.0 mAh	
193	●	Conrad energy Endurance NIMH 9 V Block-Akku 270 mAh	Conrad Electronic SE	9 Volt	NIMH	✓	8.4	270.0 mAh	
196	●	Conrad energy Endurance NIMH Baby-Akku 3000 mAh Z-Lötfahne	Conrad Electronic SE	C	NIMH	✓	1.2	3000.0 mAh	
190	●	Conrad energy Endurance NIMH Baby-Akku 4000 mAh	Conrad Electronic SE	C	NIMH	✓	1.2	4000.0 mAh	
188	●	Conrad energy Endurance NIMH Micro-Akku 1000 mAh	Conrad Electronic SE	AAA	NIMH	✓	1.2	1000.0 mAh	
187	●	Conrad energy Endurance NIMH Micro-Akku 800 mAh	Conrad Electronic SE	AAA	NIMH	✓	1.2	800.0 mAh	
195	●	Conrad energy Endurance NIMH Micro-Akku 800 mAh Z-Lötfahne	Conrad Electronic SE	AAA	NIMH	✓	1.2	800.0 mAh	
189	●	Conrad energy Endurance NIMH Mignon-Akku 2000 mAh Z-Lötfahne	Conrad Electronic SE	AA	NIMH	✓	1.2	2000.0 mAh	
194	●	Conrad energy Endurance NIMH Mignon-Akku 2500 mAh	Conrad Electronic SE	AA	NIMH	✓	1.2	2500.0 mAh	
191	●	Conrad energy Endurance NIMH Mono-Akku 8000 mAh	Conrad Electronic SE	D	NIMH	✓	1.2	8000.0 mAh	
137	●	Conrad energy LiIon 9 V Block-Akku 350 mAh 7.2 V	Conrad Electronic SE	9 Volt	LiIon	✓	7.2	350.0 mAh	
273	●	Conrad energy LiIon 9 V Block-Akku 500 mAh 7.2 V	Conrad Electronic SE	9 Volt	LiIon	✓	7.2	500.0 mAh	
274	●	Conrad energy Lithium Fotoakku CR 123 650 mAh 3 V	Conrad Electronic SE		LiIon	✓	3.0	650.0 mAh	
168	●	Conrad energy Lithium Knopfzelle CR2032 65 mAh 3 V	Conrad Electronic SE	Button	Lithium	✓	3.0	65.0 mAh	
167	●	Conrad energy Lithium Knopfzelle LIR2016 12 mAh 3.6 V	Conrad Electronic SE	Button	Lithium	✓	3.6	12.0 mAh	
170	●	Conrad energy Lithium Knopfzelle LIR2025 30 mAh 3.6 V	Conrad Electronic SE	Button	Lithium	✓	3.6	30.0 mAh	
169	●	Conrad energy Lithium Knopfzelle LIR2032 45 mAh 3.6 V	Conrad Electronic SE	Button	Lithium	✓	3.6	45.0 mAh	
171	●	Conrad energy Lithium Knopfzelle LIR2430 80 mAh 3.6 V	Conrad Electronic SE	Button	Lithium	✓	3.6	80.0 mAh	
172	●	Conrad energy Lithium Knopfzelle LIR2450 120 mAh 3.6 V	Conrad Electronic SE	Button	Lithium	✓	3.6	120.0 mAh	
173	●	Conrad energy Lithium Knopfzelle LIR2477 180 mAh 3.6 V	Conrad Electronic SE	Button	Lithium	✓	3.6	180.0 mAh	
166	●	Conrad energy NIMH 9 V Block-Akku 160 mAh	Conrad Electronic SE	9 Volt	NIMH	✓	9.6	160.0 mAh	

In order to minimize manual editing please choose one of the deposited battery types at the top whenever possible. The data associated with this type will then be used for your own battery. Now only the battery **name** is missing, then the dialog may be closed with **Save**. The new entry for the battery will then be displayed by the **My Batteries** list.

It is recommended that you create all your batteries this way to build up the basis for your new database. These batteries may directly be used for the windows representing the charging devices (click on the respective bay or the battery symbols at the bottom). The measurement data will then be logged into the database.